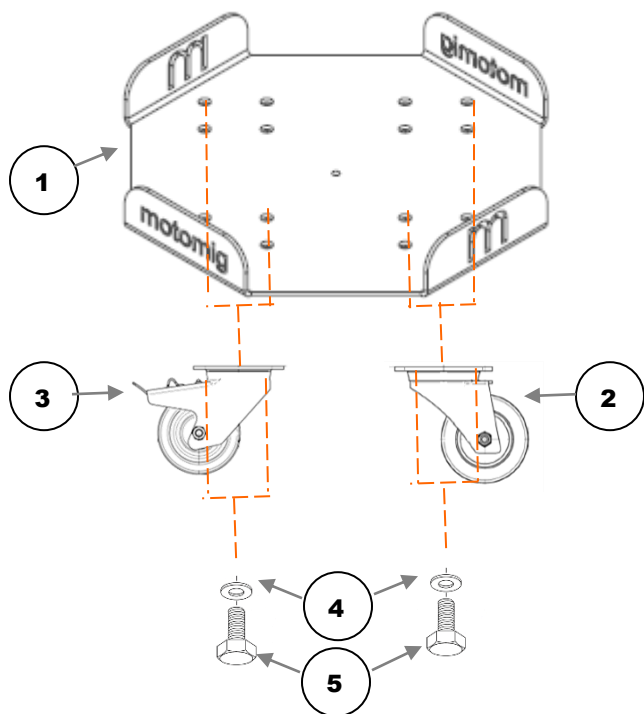


HOW TO ASSEMBLE THE TROLLEY KIT?



Item	Description	N° of units/Kit
1	Metal base	1
2	Fixed wheel	2
3	Rotating wheel with brake	2
4	Flat ring M8	16
5	External Hex Head Screw M8x16	16

Assembly:

Step 1 – Invert the base (1)

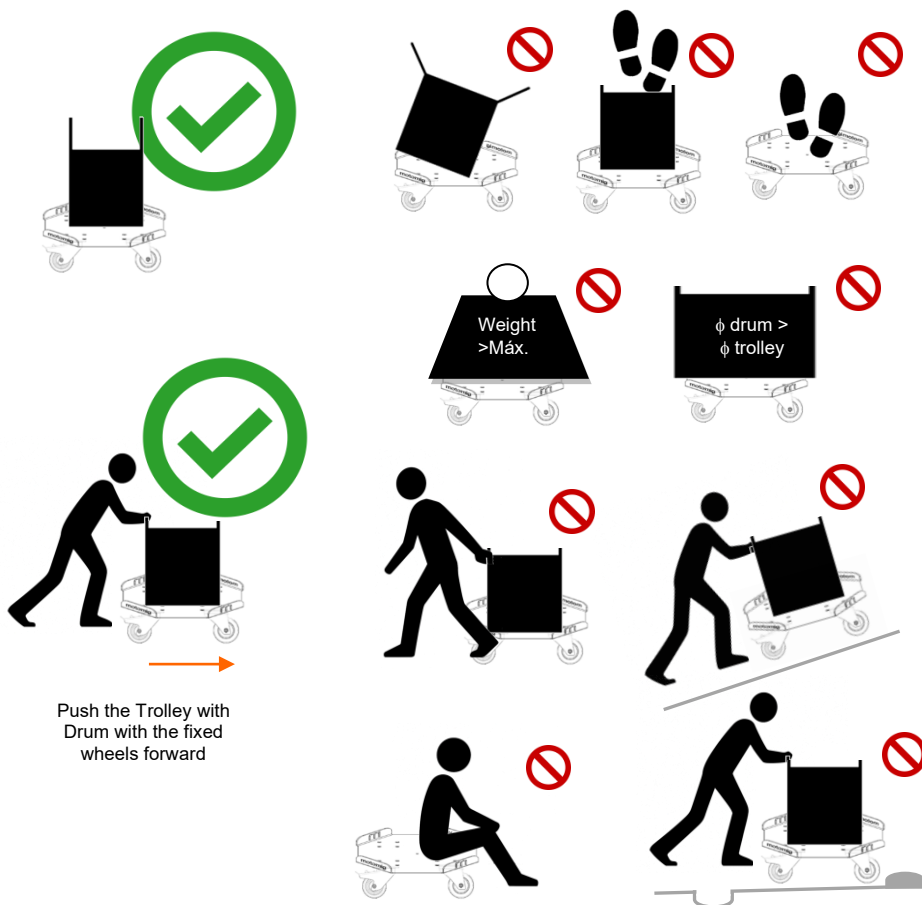
Step 2 – Place the fixed wheels (2) parallel as shown in the figure and align with the drilling

Step 3 – Place the washers (4) and screws (5) in the holes and tighten

Step 4 – Place the swivel wheels (3) parallel and align with the drilling

Step 5 – Place the washers (4) and screws (5) in the holes and tighten

CARE WHEN HANDLING THE TROLLEY WITH THE DRUM



Good handling practices:

- Check if the size and weight of the drum are suitable for the trolley
- Center the drum on the trolley. Do not leave the drum tilted on the trolley edge
- When moving the loaded trolley, move with the fixed wheels forward
- Do not move the trolley backwards
- When placing the loaded trolley in the place of use, lock both swivel wheels
- Do not move the trolley on slopes and/or uneven surfaces
- Do not walk on the loaded or empty trolley
- Do not sit on the trolley